



Mushroom-head pushbutton



Emergency-Stop pushbutton

Technical data

Mushroom-head pushbutton (Emergency stop and normal version)

Marking accd. to 94/9/EC	Complete certificate ¹⁾ Ⓔ II 2 G Ex de IIC T6	Component certificate Ⓔ II 2 G Ex de IIC/IIB Gb Ⓔ I M2 Ex de I Mb
EC-Type Examination Certificate	PTB 99 ATEX 1034	IBExU 14 ATEX 1030 U
IECEX Certificate of Conformity		IECEX IBExU 14.0005 U
Marking accd. to IECEx		Ex de IIC/IIB Gb Ex de I Mb
Operating temperature range	-55°C up to + 80 °C	-45 °C up to +80 °C (IIC) -60 °C up to +80 °C (IIB)
Permissible ambient temperature	-25 °C up to + 50 °C	
Application temperature ²⁾		-45 °C up to +55 °C (IIC) -60 °C up to +55 °C (IIB)
Rated voltage	400 V AC	500 V AC
Rated current	16 A	16 A
Rated current with gold contact points	0.4 A	0.4 A
Rated making-/rated breaking capacity accd. EN 60947-5-1	AC-15: U _o 250 V / I _o 6 A U _o 400 V / I _o 4 A DC-13: U _o 24 V / I _o 6 A U _o 220 V / I _o 1 A	AC-15: U _o 250 V / I _o 6 A U _o 500 V / I _o 4 A DC-13: U _o 24 V / I _o 6 A U _o 220 V / I _o 1 A
Connecting terminals	2 x 2.5 mm ²	2 x 2.5 mm ²
Degree of protection accd. to EN 60529	IP66 ¹⁾	IP00
Dimensions (L x W x H)	approx. 156 x 38 x 67 mm	approx. 139 x 38 x 57 mm
Weight	0.30 kg	0.25 kg
Cable gland	M25x1.5 for cable Ø 6- 15 mm	–
Type of mounting	Ø 30.3 mm fixing hole	Ø 30.3 mm fixing hole
Enclosure colour	grey	grey
Gasket material	Neoprene (standard), Fluoric Silicone or Viton on request	

¹⁾ with protective cover IP66

²⁾ The limits of the operating temperature range and the max. permissible temperature rise of the components have to be taken into account. See also pages 2.4.34/35.

Ex-control and signal units for panel mounting



Emergency-Stop pushbutton



Mushroom-head pushbutton

4

Ordering code for component (Code 2) Code A - B - C - D - E

A	B	C	D	E
GHG 418 815	-	R	-	-

Code	Component	Code
A	Mushroom-head pushbutton	GHG 418 815

Code	Circuit	Contacts durch Ziehen des Pushbuttones	key released	Code silver contact points	gold contact points
B	2 NC			3	6
	2 NO			4	7
	1 NO + 1 NC			5	8

Code	Mushroom-head pushbutton inscription and colour	Code
C	emergency stop EMERGENCY STOP (German - English) ¹⁾	1
	emergency stop ARRET D'URGENCE (German - French) ¹⁾	4
	red	1
	yellow ¹⁾	2
	black ²⁾	3

Code	released	engaged	unlocking	Code
D	not lockable	not lockable	n/a (pushbutton function)	1 ²⁾
	not lockable	lockable	hand released	2 ¹⁾
	not lockable	lockable	key released	3 ¹⁾

Code	Inscription (label)	Code	Inscription	Code
E	0, I, Start, Stop	01	0	02
	I	03	I I	04
		05	STOP	06
	START	07	NOT-AUS ¹⁾	00

¹⁾ only emergency stop mushroom head pushbutton

²⁾ only mushroom-head pushbutton normal version



Mushroom-head pushbutton

Emergency-Stop pushbutton

Example for ordering code (Code 2)

Contact system	Pushbutton colour	Inscription	Order No.				
			A	B	C	D	E
EMERGENCY STOP mushroom-head pushbutton red, with silver contact points, without protective cover							
content with inscription D/E, hand released							
2 NC	red	German/English	GHG 418 815	3	R 1	2 00	
2 NC	red	German/French	GHG 418 815	3	R 4	2 00	
2 NO	red	German/English	GHG 418 815	4	R 1	2 00	
2 NO	red	German/French	GHG 418 815	4	R 4	2 00	
1 NO + 1 NC	red	German/English	GHG 418 815	5	R 1	2 00	
1 NO + 1 NC	red	German/French	GHG 418 815	5	R 4	2 00	

Version with inscription D/E, key released

2 NC	red	German/English	GHG 418 815	3	R 1	3 00
2 NC	red	German/French	GHG 418 815	3	R 4	3 00
2 NO	red	German/English	GHG 418 815	4	R 1	3 00
2 NO	red	German/French	GHG 418 815	4	R 4	3 00
1 NO + 1 NC	red	German/English	GHG 418 815	5	R 1	3 00
1 NO + 1 NC	red	German/French	GHG 418 815	5	R 4	3 00

Mushroom-head pushbutton, with silver contact points, without protective cover

version with inscription D/E, pushbutton function only						
2 NC	black	0, I, START, STOP	GHG 418 815	3	R 3	1 01
2 NC	yellow	0, I, START, STOP	GHG 418 815	3	R 2	1 01
2 NO	black	0, I, START, STOP	GHG 418 815	4	R 3	1 01
2 NO	yellow	0, I, START, STOP	GHG 418 815	4	R 2	1 01
1 NO + 1 NC	black	0, I, START, STOP	GHG 418 815	5	R 3	1 01
1 NO + 1 NC	yellow	0, I, START, STOP	GHG 418 815	5	R 2	1 01

Accessories

Type	OU	Order No.
Protective cover to meet IP66	5	GHG 410 1939 R0002

Please pay attention that only order units (OU) according to the ordering details can be delivered.

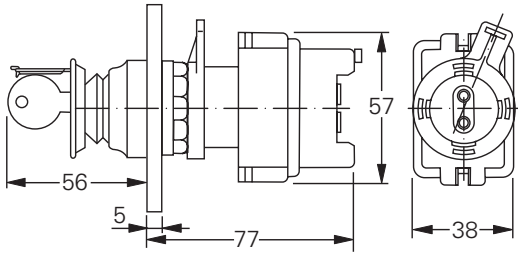


Mushroom-head pushbutton

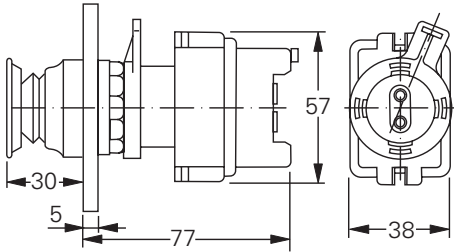
Mushroom-head pushbutton

4

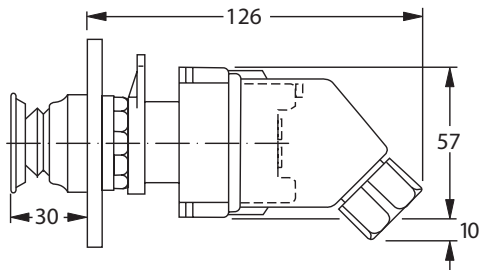
Dimension drawing



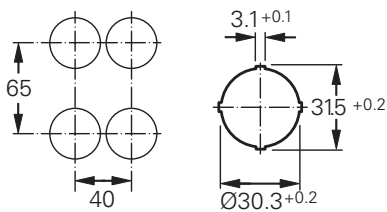
Mushroom-head pushbutton without protective cover with key release



Mushroom-head pushbutton without protective cover



Mushroom-head pushbutton with protective cover



Minimum distances