



Double pushbutton

Pushbutton

## Technical data

### Pushbutton Typ 418 811 and double pushbutton Typ 418 814

	Complete certificate <sup>1)</sup>	Component certificate
Marking accd. to 94/9/EC	Ⓔ II 2 G Ex de IIC T6	Ⓔ II 2 G Ex de IIC/IIB Gb Ⓔ I M2 Ex de I Mb
EC-Type Examination Certificate	PTB 99 ATEX 1034	IBExU 14 ATEX 1030 U
IECEX Certificate of Conformity		IECEX IBExU 14.0005 U
Marking accd. to IECEX		Ex de IIC/IIB Gb Ex de I Mb
Operating temperature range	-55°C up to + 80 °C	-45 °C up to +80 °C (IIC) -60 °C up to +80 °C (IIB)
Permissible ambient temperature	-55 °C up to + 50 °C	
Application temperature <sup>2)</sup>		-45 °C up to +55 °C (IIC) -60 °C up to +55 °C (IIB)
Rated voltage	400 V AC	500 V AC
Rated current	16 A	16 A
Rated current with gold contact points	0.4 A	0.4 A
Rated making-/rated breaking capacity accd. EN 60947-5-1	AC-15: U <sub>o</sub> 250 V / I <sub>o</sub> 6 A U <sub>o</sub> 400 V / I <sub>o</sub> 4 A DC-13: U <sub>o</sub> 24 V / I <sub>o</sub> 6 A U <sub>o</sub> 220 V / I <sub>o</sub> 1 A	AC-15: U <sub>o</sub> 250 V / I <sub>o</sub> 6 A U <sub>o</sub> 500 V / I <sub>o</sub> 4 A DC-13: U <sub>o</sub> 24 V / I <sub>o</sub> 6 A U <sub>o</sub> 220 V / I <sub>o</sub> 1 A
Connecting terminals	2 x 2.5 mm <sup>2</sup>	2 x 2.5 mm <sup>2</sup>
Degree of protection accd. to EN 60529	IP66 <sup>1)</sup>	IP00
Dimensions (L x W x H)	approx. 140 x 38 x 67 mm	approx. 91 x 38 x 57 mm
Weight	0.25 kg	0.20 kg
Cable gland	M25x1.5 for cable Ø 6- 15 mm	–
Type of mounting	Ø 30.3 mm fixing hole	Ø 30.3 mm fixing hole
Enclosure colour	grey	grey
Gasket material	Neoprene (standard), Fluoric Silicone or Viton on request	

<sup>1)</sup> with protective cover IP66

<sup>2)</sup> The limits of the operating temperature range and the max. permissible temperature rise of the components have to be taken into account. See also pages 2.4.34/35.

## Ex-control and signal units for panel mounting



Pushbutton



Double pushbutton

4

### Ordering code for component (Code 2) Code A - B - C1 - (C2)

A                      B                      C2                      C1  
 GHG 418 81\_      \_                      R                      \_                      \_

Code	Component	Code
A	Pushbutton	GHG 418 811
	Double pushbutton	GHG 418 814

Code	Circuit	Contacts	Code	
			silver contact points	gold contact points
B	2 NC		3	6
	2 NO		4	7
	1 NO + 1 NC		5	8

Code	Inscription (label)	Code	Inscription	Code
C1, C2	0, I, Start, Stop	01	0	02
	I	03	I I	04
		05	STOP	06
	START	07	LANGSAM	09
	SCHNELL	10	EMERG.STOP	11
	→	12	↑	13
	ARRET	14	MARCHE	15
	AUF	16	AB	17
	Neutral white	18	Neutral grün	19
	0, I, Arret, Marche	20	UP	24
	DOWN	25	ZU	26
	ON	27	OFF	28
	+	30	-	31
	Neutral rot	33	Neutral yellow	34
	EIN	36	AUS	37
	Neutral black	38	AUTO	39
	Neutral blau	40	HAND	50
	SENKEN	51	HEBEN	52
	LINKS	53	RECHTS	54
	FAST	55	SLOW	56
	RESET	57	OPEN	58



Double pushbutton

Pushbutton

**Example for ordering code (Code 2)**

Content Circuit	Label	Ordering code			
		A	B	C1	C2
<b>Pushbutton without protective cover, silver contact points</b>					
2 NC	(0, I, START, STOP)	<b>GHG 418 811</b>	3	<b>R0001</b>	–
2 NO	(0, I, START, STOP)	<b>GHG 418 811</b>	4	<b>R0001</b>	–
1 NO + 1 NC	(0, I, START, STOP)	<b>GHG 418 811</b>	5	<b>R0001</b>	–
<b>Double pushbutton without protective cover, with gold contact points</b>					
2 NC	(0, I, START, STOP)	<b>GHG 418 814</b>	6	<b>R00</b>	<b>01</b>
2 NO	(0, I, START, STOP)	<b>GHG 418 814</b>	7	<b>R00</b>	<b>01</b>
1 NO + 1 NC	(0, I, START, STOP)	<b>GHG 418 814</b>	8	<b>R00</b>	<b>01</b>

**Accessories**

Type	OU	Order No.
Protective cover to meet IP66	5	<b>GHG 410 1939 R0002</b>

Please pay attention that only order units (OU) according to the ordering details can be delivered.

**| Ex-control and signal units for panel mounting |**



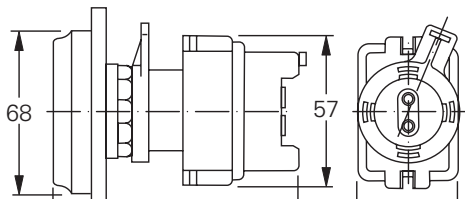
Pushbutton



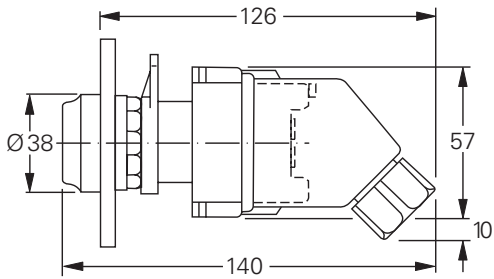
Double pushbutton

4

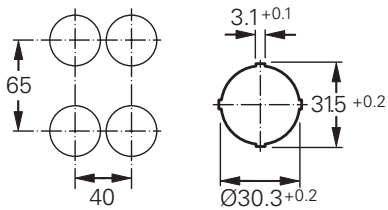
**Dimension drawing**



(Double-)pushbutton without protective cover



(Double-)pushbutton with protective cover



Minimum distances

Dimensions in mm