





Ordering details

Type	Scope of delivery	Colour of protective cover	Order No.
 dKLK 23/eXLink	1 x eXLink coupler 2-pol. + PE for cable Ø 7.5 - 11 mm	clear	GHG 871 1001 R0001
dKLK 23/eXLink	1 x eXLink coupler 2-pol. + PE for cable Ø 7.5 - 11 mm	red	GHG 871 1101 R0001
dKLK 23/eXLink	1 x eXLink coupler 2-pol. + PE for cable Ø 7.5 - 11 mm	green	GHG 871 1201 R0001
dKLK 23/eXLink	1 x eXLink coupler 2-pol. + PE for cable Ø 7.5 - 11 mm	blue	GHG 871 1301 R0001
dKLK 23 CG-S /eXLink ¹⁾	1 x eXLink coupler 2-pol. + PE for cable Ø 7.5 - 11 mm, with CG-S-module and address-switch	clear	GHG 871 2001 R0001
 dKLK 23/Ex d	1 x Ex-d-cable gland M20 x 1.5 for Ø 8.5 -13.5 mm	clear	GHG 871 1001 R0101
dKLK 23/Ex d	1 x Ex-d-cable gland M20 x 1.5 for Ø 8.5 -13.5 mm	red	GHG 871 1101 R0101
dKLK 23/Ex d	1 x Ex-d-cable gland M20 x 1.5 for Ø 8.5 -13.5 mm	green	GHG 871 1201 R0101
dKLK 23/Ex d	1 x Ex-d-cable gland M20 x 1.5 for Ø 8.5 -13.5 mm	blue	GHG 871 1301 R0101
dKLK 23 CG-S /Ex d ¹⁾	1 x Ex-d-cable gland M20 x 1.5 for Ø 8.5 -13.5 mm with CG-S-module and address-switch	clear	GHG 871 2001 R0101
 dKLK 23 LED/eXLink	1 x eXLink coupler 2-pol. + PE for cable Ø 7.5 - 11 mm	clear	GHG 871 4021 R0001
dKLK 23 LED/eXLink	1 x eXLink coupler 2-pol. + PE for cable Ø 7.5 - 11 mm	red	GHG 871 4121 R0001
dKLK 23 LED/eXLink	1 x eXLink coupler 2-pol. + PE for cable Ø 7.5 - 11 mm	green	GHG 871 4221 R0001
dKLK 23 LED/eXLink	1 x eXLink coupler 2-pol. + PE for cable Ø 7.5 - 11 mm	blue	GHG 871 4321 R0001
 dKLK 23 LED/Ex d	1 x Ex-d-cable gland M20 x 1.5 for Ø 8.5 -13.5 mm	clear	GHG 871 4021 R0101
dKLK 23 LED/Ex d	1 x Ex-d-cable gland M20 x 1.5 for Ø 8.5 -13.5 mm	red	GHG 871 4121 R0101
dKLK 23 LED/Ex d	1 x Ex-d-cable gland M20 x 1.5 for Ø 8.5 -13.5 mm	green	GHG 871 4221 R0101
dKLK 23 LED/Ex d	1 x Ex-d-cable gland M20 x 1.5 for Ø 8.5 -13.5 mm	blue	GHG 871 4321 R0101

1) For connection to CEAG emergency supply systems, with address switch for 20 addresses.

A wide selection of cable glands can be found at www.crouse-hinds.de/products or in the catalogue Part 2, Section 3

Accessories

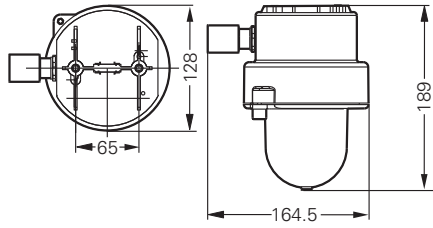
Type	Order No.
Flash module Eurolite E27 Strobe	GHG 870 1912 R0001
Exit sign cube (242 x 227 x 242 mm)	4 0071 344 115
Compact fluorescent lamp 7 W with EVG	GHG 870 9302 P0002
Philips Master LED lamp 6W E27 CW 55	GHG 870 1914 R0001

3.5

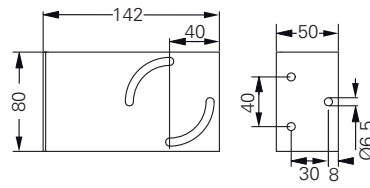
Dimension drawing / Polar curve

dKLK 23 / dKLK 23 LED / dKLK 23 CG-S

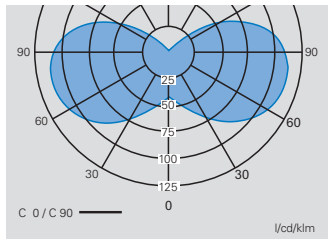
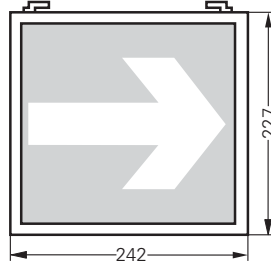
dKLK 23



Mounting bracket



Exit sign cube



Polar curve
dKLK 23 / dKLK 23 CG-S

Dimensions in mm



3

Technical data

	dKLK 23	dKLK 23 LED	dKLK 23 CG-S
EC-Type Examination Certificate	BVS 10 ATEX E 003	BVS 10 ATEX E 003	BVS 10 ATEX E 003
IECEX Certificate of Conformity	IECEX BVS 10.0003	IECEX BVS 10.0003	IECEX BVS 10.0003
Marking accd. to 94/9/EC	⊕ II 2G Ex d IIC T6 Gb ⊕ II 2D Ex tb IIIC T80°C Db IP66	⊕ II 2G Ex d IIC T6 Gb ⊕ II 2D Ex tb IIIC T80°C Db IP66	⊕ II 2G Ex d IIC T6 Gb ⊕ II 2D Ex tb IIIC T80°C Db IP66
Marking accd. to IECEx	Ex d IIC T6 Gb Ex tb IIIC T80°C Db	Ex d IIC T6 Gb Ex tb IIIC T80°C Db	Ex d IIC T6 Gb Ex tb IIIC T80°C Db
Permissible ambient temperature	-20 °C up to +45 °C (dept. on lamp power and operating position)	-20 °C up to +40 °C	-20 °C up to +45 °C (dept. on lamp power and operating position)
Rated voltage	230 V AC / 230 V DC	230 V AC	230 V AC / 230 V DC
Rated current	approx. 30 mA	approx. 30 mA	approx. 40 mA
Frequency	50 - 60 Hz (AC)	50 - 60 Hz (AC)	50 - 60 Hz (AC)
Power factor cos φ	≥ 0.95	≥ 0.95	≥ 0.95
Protection class	I	I	I
Lamp / Illuminant	Compact-fluorescent lamp with integrated electr. ballast, lamp cap E27, lamp power 5-8 W, manufacturer Philips MASTER PL Electronic 5W/8 W or equivalent; flashmodule (see accessories)	Philips Master LED 6 W	Compact-fluorescent lamp with integrated electr. ballast, lamp cap E27, lamp power 5-8 W, manufacturer Philips MASTER PL Electronic 5W/8 W or equivalent;
Rated luminous flux	approx. 400 lm (7/8 W) ¹⁾	approx. 470 lm ¹⁾	approx. 400 lm (7/8 W) ¹⁾
Lamp cap	E27 accord. IEC 60238	E27 accord. IEC 60238	E27 accord. IEC 60238
Dimensions (L x W x H)	164.5 x 189 x 128 mm	164.5 x 189 x 128 mm	164.5 x 189 x 128 mm
Connecting terminals	flameproof inlet eXLink, 3-pole, 2 + PE, cage clamp terminal for cable Ø 8-11 mm, max. 1.5 mm ² or flameproof cable gland M20 x 1.5 for cable Ø 8.5-13.5 mm; terminal L, N, PE max. 2.5 mm ² clamp terminal	flameproof inlet eXLink, 3-pole, 2 + PE, cage clamp terminal for cable Ø 8-11 mm max. 1.5 mm ² or flameproof cable gland M20 x 1.5 for cable Ø 8.5-13.5 mm, terminal L, N, PE max. 2.5 mm ² clamp terminal	flameproof inlet eXLink, 3-pole, 2 + PE, cage clamp terminal for cable Ø 8-11 mm max. 1.5 mm ² or flameproof cable gland M20 x 1.5 for cable Ø 8.5-13.5 mm, terminal L, N, PE max. 2.5 mm ² clamp terminal
Enclosure material	Glass-fibre reinforced polyester	Glass-fibre reinforced polyester	Glass-fibre reinforced polyester
Weight	1.7 kg	1.7 kg	1.7 kg
Degree of protection accd. to EN 60529	IP66	IP66	IP66
Protective cover / protective bowl	Polycarbonate	Polycarbonate	Polycarbonate

¹⁾ depends on used lamps