

## Ordering details

Type	Content	Terminals	Through-wiring single-ended	Through-wiring twin-ended	Cable gland/ thread	Screw plugs	Blanking plug	Order No.
<b>RLF 250../.. (twin lamp)</b>								
	RLF 25018/18 (2 x 18 W)	2/5-2K	2 x 5	–	x	2 x M25, plastic	1	<b>1 2283 218 001</b>
	RLF 25018/18 (2 x 18 W)	2/5-2M <sup>(1)</sup>	2 x 5	–	x	2 x M20, metal thread	1 x M20	<b>1 2283 218 002</b>
	RLF 25036/36 (2 x 36 W)	2/5-2K	2 x 5	–	x	2 x M25, plastic	1	<b>1 2283 236 001</b>
	RLF 25036/36 (2 x 36 W)	2/5-2M <sup>(1)</sup>	2 x 5	–	x	2 x M20, metal thread	1 x M20	<b>1 2283 236 002</b>
	RLF 25058/58 (2 x 58 W)	2/5-2K	2 x 5	–	x	2 x M25, plastic	1	<b>1 2283 258 001</b>
	RLF 25058/58 (2 x 58 W)	2/5-2M <sup>(1)</sup>	2 x 5	–	x	2 x M20, metal thread	1 x M20	<b>1 2283 258 002</b>
<b>RLF 2503.. (three lamps)</b>								
	RLF 250336 (3 x 36 W)	2/5-2K	2 x 5	–	x	2 x M25, plastic	1	<b>1 2283 336 011</b>
	RLF 250336 (3 x 36 W)	2/5-2M <sup>(1)</sup>	2 x 5	–	x	2 x M20, metal thread	1 x M20	<b>1 2283 336 012</b>
	RLF 250358 (3 x 58 W)	2/5-2K	2 x 5	–	x	2 x M25, plastic	1	<b>1 2283 358 011</b>
	RLF 250358 (3 x 58 W)	2/5-2M <sup>(1)</sup>	2 x 5	–	x	2 x M20, metal thread	1 x M20	<b>1 2283 358 012</b>
<b>RLF 2504.. (four lamps)</b>								
	RLF 250418 (4 x 18 W)	2/5-2K	2 x 5	–	x	2 x M25, plastic	1	<b>1 2283 418 011</b>
	RLF 250418 (4 x 18 W)	2/5-2M <sup>(1)</sup>	2 x 5	–	x	2 x M20, metal thread	1 x M20	<b>1 2283 418 012</b>
	RLF 250436 (4 x 36 W)	2/5-2K	2 x 5	–	x	2 x M25, plastic	1	<b>1 2283 436 011</b>
	RLF 250436 (4 x 36 W)	2/5-2M <sup>(1)</sup>	2 x 5	–	x	2 x M20, metal thread	1 x M20	<b>1 2283 436 012</b>
	RLF 250458 (4 x 58 W)	2/5-2K	2 x 5	–	x	2 x M25, plastic	1	<b>1 2283 458 011</b>
	RLF 250458 (4 x 58 W)	2/5-2M <sup>(1)</sup>	2 x 5	–	x	2 x M20, metal thread	1 x M20	<b>1 2283 458 012</b>
<b>RLF 250../.. CG-S (twin lamp)</b>								
	RLF 25018/18 CG-S (2 x 18 W)	2/5-2K	2 x 5	–	x	2 x M25, plastic	1	<b>1 2283 218 401</b>
	RLF 25018/18 CG-S (2 x 18 W)	2/5-2M <sup>(1)</sup>	2 x 5	–	x	2 x M20, metal thread	1 x M20	<b>1 2283 218 402</b>
	RLF 25036/36 CG-S (2 x 36 W)	2/5-2K	2 x 5	–	x	2 x M25, plastic	1	<b>1 2283 236 401</b>
	RLF 25036/36 CG-S (2 x 36 W)	2/5-2M <sup>(1)</sup>	2 x 5	–	x	2 x M20, metal thread	1 x M20	<b>1 2283 236 402</b>
	RLF 25058/58 CG-S (2 x 58 W)	2/5-2K	2 x 5	–	x	2 x M25, plastic	1	<b>1 2283 258 401</b>
	RLF 25058/58 CG-S (2 x 58 W)	2/5-2M <sup>(1)</sup>	2 x 5	–	x	2 x M20, metal thread	1 x M20	<b>1 2283 258 402</b>
<b>RLF-INOX 250../.. (twin lamp, stainless steel version)</b>								
	RLF-INOX 25018/18 (2 x 18 W)	2/5-2M <sup>(1)</sup>	2 x 5	–	x	2 x M20, metal thread	1 x M20	<b>1 2283 218 003</b>
	RLF-INOX 25018/18 (2 x 18 W)	2/5-2K	2 x 5	–	x	2 x M25, plastic	1	<b>1 2283 218 004</b>
	RLF-INOX 25036/36 (2 x 36 W)	2/5-2K	2 x 5	–	x	2 x M25, plastic	1	<b>1 2283 236 003</b>
	RLF-INOX 25036/36 (2 x 36 W)	2/5-2M <sup>(1)</sup>	2 x 5	–	x	2 x M20, metal thread	1 x M20	<b>1 2283 236 004</b>
	RLF-INOX 25058/58 (2 x 58 W)	2/5-2K	2 x 5	–	x	2 x M25, plastic	1	<b>1 2283 258 003</b>
	RLF-INOX 25058/58 (2 x 58 W)	2/5-2M <sup>(1)</sup>	2 x 5	–	x	2 x M20, metal thread	1 x M20	<b>1 2283 258 004</b>
<b>RLF-INOX 2503.. (three lamps, stainless steel version)</b>								
	RLF-INOX 250336 (3 x 36 W)	2/5-2K	2 x 5	–	x	2 x M25, plastic	1	<b>1 2283 336 001</b>
	RLF-INOX 250336 (3 x 36 W)	2/5-2M <sup>(1)</sup>	2 x 5	–	x	2 x M20, metal thread	1 x M20	<b>1 2283 336 002</b>
	RLF-INOX 250358 (3 x 58 W)	2/5-2K	2 x 5	–	x	2 x M25, plastic	1	<b>1 2283 358 001</b>
	RLF-INOX 250358 (3 x 58 W)	2/5-2M <sup>(1)</sup>	2 x 5	–	x	2 x M20, metal thread	1 x M20	<b>1 2283 358 002</b>
<b>RLF-INOX 2504.. (four lamps, stainless steel version)</b>								
	RLF-INOX 250418 (4 x 18 W)	2/5-2K	2 x 5	–	x	2 x M25, plastic	1	<b>1 2283 418 001</b>
	RLF-INOX 250418 (4 x 18 W)	2/5-2M <sup>(1)</sup>	2 x 5	–	x	2 x M20, metal thread	1 x M20	<b>1 2283 418 002</b>
	RLF-INOX 250436 (4 x 36 W)	2/5-2K	2 x 5	–	x	2 x M25, plastic	1	<b>1 2283 436 001</b>
	RLF-INOX 250436 (4 x 36 W)	2/5-2M <sup>(1)</sup>	2 x 5	–	x	2 x M20, metal thread	1 x M20	<b>1 2283 436 002</b>
	RLF-INOX 250458 (4 x 58 W)	2/5-2K	2 x 5	–	x	2 x M25, plastic	1	<b>1 2283 458 001</b>
	RLF-INOX 250458 (4 x 58 W)	2/5-2M <sup>(1)</sup>	2 x 5	–	x	2 x M20, metal thread	1 x M20	<b>1 2283 458 002</b>





Scope of delivery without lamp and fixing accessories  
Metal cable glands see catalogue part 2: 2.3.12 ff

## Ordering details

RLF 250 ../.. N /

RLF INOX 250 ../.. N

## Ordering details

Type	Content	Emergen- cy lighting duration	Terminals	Through- wiring single-ended	Through- wiring twin-ended	Cable gland/ thread	Screw plugs	Order No.	
<b>RLF 250../.. N (twin lamp)</b>									
	RLF 25018/18 N (2 x 18 W)	2/6-2K	1.5 h	2 x 6	–	x	2 x M25, plastic	1 x M25	<b>1 2283 218 201</b>
	RLF 25018/18 N (2 x 18 W)	2/6-2M	1.5 h	2 x 6	–	x	2 x M20 x 1.5, metal thread	1 x M20	<b>1 2283 218 202</b>
	RLF 25018/18 N (2 x 18 W)	2/6-2K	3 h	2 x 6	–	x	2 x M25, plastic	1 x M25	<b>1 2283 218 301</b>
	RLF 25018/18 N (2 x 18 W)	2/6-2M	3 h	2 x 6	–	x	2 x M20 x 1.5, metal thread	1 x M20	<b>1 2283 218 302</b>
	RLF 25036/36 N (2 x 36 W)	2/6-2K	1.5 h	2 x 6	–	x	2 x M25, plastic	1 x M25	<b>1 2283 236 201</b>
	RLF 25036/36 N (2 x 36 W)	2/6-2M	1.5 h	2 x 6	–	x	2 x M20 x 1.5, metal thread	1 x M20	<b>1 2283 236 202</b>
	RLF 25036/36 N (2 x 36 W)	2/6-2K	3 h	2 x 6	–	x	2 x M25, plastic	1 x M25	<b>1 2283 236 301</b>
	RLF 25036/36 N (2 x 36 W)	2/6-2M	3 h	2 x 6	–	x	2 x M20 x 1.5, metal thread	1 x M20	<b>1 2283 236 302</b>
<b>RLF 2504.. N (four lamps)</b>									
	RLF 250418 N (4 x 18 W)	2/6-2K	1.5 h	2 x 6	–	x	2 x M25, plastic	1 x M25	<b>1 2283 418 201</b>
	RLF 250418 N (4 x 18 W)	2/6-2M	1.5 h	2 x 6	–	x	2 x M20 x 1.5, metal thread	1 x M20	<b>1 2283 418 202</b>
	RLF 250418 N (4 x 18 W)	2/6-2K	3 h	2 x 6	–	x	2 x M25, plastic	1 x M25	<b>1 2283 418 301</b>
	RLF 250418 N (4 x 18 W)	2/6-2M	3 h	2 x 6	–	x	2 x M20 x 1.5, metal thread	1 x M20	<b>1 2283 418 302</b>
	RLF 250436 N (4 x 36 W)	2/6-2K	1.5 h	2 x 6	–	x	2 x M25, plastic	1 x M25	<b>1 2283 436 201</b>
	RLF 250436 N (4 x 36 W)	2/6-2M	1.5 h	2 x 6	–	x	2 x M20 x 1.5, metal thread	1 x M20	<b>1 2283 436 202</b>
	RLF 250436 N (4 x 36 W)	2/6-2K	3 h	2 x 6	–	x	2 x M25, plastic	1 x M25	<b>1 2283 436 301</b>
	RLF 250436 N (4 x 36 W)	2/6-2M	3 h	2 x 6	–	x	2 x M20 x 1.5, metal thread	1 x M20	<b>1 2283 436 302</b>
<b>RLF INOX 250../.. N (twin lamp, stainless steel version)</b>									
	RLF-INOX 25018/18 N (2 x 18 W)	2/6-2K	1.5 h	2 x 6	–	x	2 x M25, plastic	1 x M25	<b>1 2283 218 203</b>
	RLF-INOX 25018/18 N (2 x 18 W)	2/6-2M	1.5 h	2 x 6	–	x	2 x M20 x 1.5, metal thread	1 x M20	<b>1 2283 218 204</b>
	RLF-INOX 25018/18 N (2 x 18 W)	2/6-2K	3 h	2 x 6	–	x	2 x M25, plastic	1 x M25	<b>1 2283 218 303</b>
	RLF-INOX 25018/18 N (2 x 18 W)	2/6-2M	3 h	2 x 6	–	x	2 x M20 x 1.5, metal thread	1 x M20	<b>1 2283 218 304</b>
	RLF-INOX 25036/36 N (2 x 36 W)	2/6-2K	1.5 h	2 x 6	–	x	2 x M25, plastic	1 x M25	<b>1 2283 236 203</b>
	RLF-INOX 25036/36 N (2 x 36 W)	2/6-2M	1.5 h	2 x 6	–	x	2 x M20 x 1.5, metal thread	1 x M20	<b>1 2283 236 204</b>
	RLF-INOX 25036/36 N (2 x 36 W)	2/6-2K	3 h	2 x 6	–	x	2 x M25, plastic	1 x M25	<b>1 2283 236 303</b>
	RLF-INOX 25036/36 N (2 x 36 W)	2/6-2M	3 h	2 x 6	–	x	2 x M20 x 1.5, metal thread	1 x M20	<b>1 2283 236 304</b>
<b>RLF INOX 2504.. N (four lamps, stainless steel version)</b>									
	RLF-INOX 250418 N (4 x 18 W)	2/6-2K	1.5 h	2 x 6	–	x	2 x M25, plastic	1 x M25	<b>1 2283 418 203</b>
	RLF-INOX 250418 N (4 x 18 W)	2/6-2M	1.5 h	2 x 6	–	x	2 x M20 x 1.5, metal thread	1 x M20	<b>1 2283 418 204</b>
	RLF-INOX 250418 N (4 x 18 W)	2/6-2K	3 h	2 x 6	–	x	2 x M25, plastic	1 x M25	<b>1 2283 418 303</b>
	RLF-INOX 250418 N (4 x 18 W)	2/6-2M	3 h	2 x 6	–	x	2 x M20 x 1.5, metal thread	1 x M20	<b>1 2283 418 304</b>
	RLF-INOX 250436 N (4 x 36 W)	2/6-2K	1.5 h	2 x 6	–	x	2 x M25, plastic	1 x M25	<b>1 2283 436 203</b>
	RLF-INOX 250436 N (4 x 36 W)	2/6-2M	1.5 h	2 x 6	–	x	2 x M20 x 1.5, metal thread	1 x M20	<b>1 2283 436 204</b>
	RLF-INOX 250436 N (4 x 36 W)	2/6-2K	3 h	2 x 6	–	x	2 x M25, plastic	1 x M25	<b>1 2283 436 303</b>
	RLF-INOX 250436 N (4 x 36 W)	2/6-2M	3 h	2 x 6	–	x	2 x M20 x 1.5, metal thread	1 x M20	<b>1 2283 436 304</b>

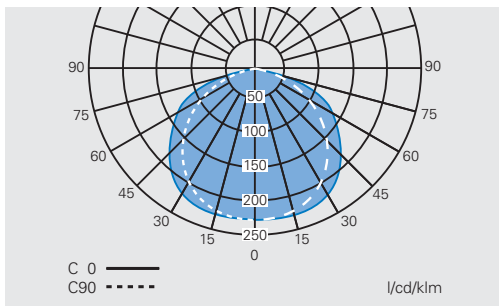
Scope of delivery without lamp and fixing accessories  
Metal cable glands see catalogue part 2: 2.3.12 ff

## Accessories

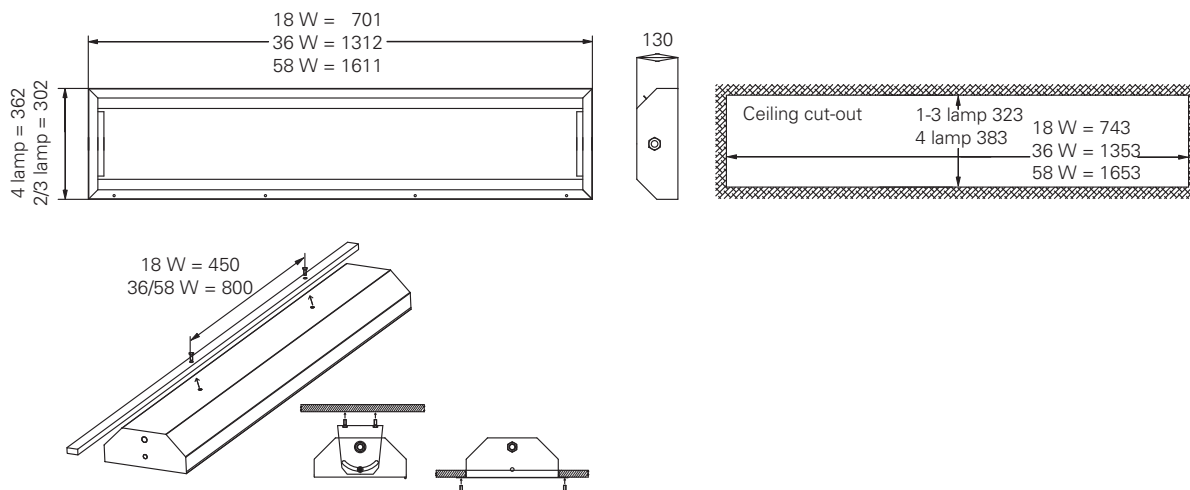


Type	Application	Order No.
Mounting frame for ceiling mounting	for RLF 25018/18, 2 x 18W	<b>3 2283 000 001</b>
Mounting frame for ceiling mounting	for RLF 250418, 4 x 18 W	<b>3 2283 000 002</b>
Mounting frame for ceiling mounting	for RLF 250, 2/3 x 36 W,	<b>3 2283 000 003</b>
Mounting frame for ceiling mounting	for RLF 250436, 4 x 36 W	<b>3 2283 000 004</b>
Mounting frame for ceiling mounting	for RLF 250, 2/3 x 58 W	<b>3 2283 000 005</b>
Mounting frame for ceiling mounting	for RLF 250458, 4 x 58 W	<b>3 2283 000 006</b>
Mounting frame for ceiling mounting	for RLF-INOX 25018/18, 2 x 18W	<b>3 2283 000 008</b>
Mounting frame for ceiling mounting	for RLF-INOX 250418, 4 x 18 W	<b>3 2283 000 009</b>
Mounting frame for ceiling mounting	for RLF-INOX 25, 2/3 x 36 W,	<b>3 2283 000 010</b>
Mounting frame for ceiling mounting	for RLF-INOX 250436, 4 x 36 W	<b>3 2283 000 011</b>
Mounting frame for ceiling mounting	for RLF-INOX 25, 2/3 x 58 W	<b>3 2283 000 012</b>
Mounting frame for ceiling mounting	for RLF-INOX 250458, 4 x 58 W	<b>3 2283 000 013</b>
Set of wall bracket adjustable (2 pcs.)	for RLF 250..	<b>3 2283 000 007</b>

## Polar curve RLF..



## RLF 250...



Dimensions in mm



## Technical data

	RLF 25018/18 / RLF 250418	RLF 25036/36 / RLF 250336
EC-Type Examination Certificate	FTZU 06 ATEX 0050 X	FTZU 06 ATEX 0050 X
Marking accd. to 94/9/EC	⊕ II 2 G Ex ed IIC T4 Gb ⊕ II 2 D Ex tb IIIC T60 °C Db	⊕ II 2 G Ex ed IIC T4 ⊕ II 2 D Ex tb IIIC T60 °C Db
Permissible ambient temperature	-20 °C up to +40 °C	-20 °C up to +40 °C
Rated voltage	110 - 254 V AC / 110 - 250 V DC	110 - 254 V AC / 110 - 250 V DC
Rated current	0.18 A / 0.36 A	0.34 A / 0.51 A
Frequency	50 - 60 Hz	50 - 60 Hz
Power factor cos φ	≥ 0.95	≥ 0.95
Circuit	EVG	EVG
Protection class	I	I
Lamp / Illuminant	2 x T26 / 18 W (T8) / 4 x T26 / 18 W (T8)	2 x T26 / 36 W (T8) / 3 x T26 / 36 W (T8)
Rated luminous flux	2700 lm <sup>1)</sup> / 5400 lm <sup>1)</sup>	6700 lm <sup>1)</sup> / 10050 lm <sup>1)</sup>
Lamp cap	G13 accd. to IEC 60061-1	G13 accd. to IEC 60061
Light efficiency in operation	70 % / 69 %	70 % / 68 %
Dimensions (L x W x H)	701 x 302 x 130 mm / 701 x 362 x 130 mm	1312 x 302 x 130 mm
Connecting terminals	L1, L2, L3, N, PE; max. 2 x 2.5 mm <sup>2</sup> through-wiring twin-ended	L1, L2, L3, N, PE; max. 2 x 2.5 mm <sup>2</sup> through-wiring twin-ended
Enclosure colour	white RAL 9010	white RAL 9010
Enclosure material	painted steel sheet, white optional: polished stainless steel 304 (1.4301)	painted steel sheet, white optional: polished stainless steel 304 (1.4301)
Weight	6.9 kg / 9.5 kg	12.9 kg / 13.4 kg
Cable glands / gland plates / enclosure drilling	Ex-e cable glands M25 x 1.5 (plastic) for cables from Ø 8 - 17 mm, option: M20 x 1.5 metal thread <sup>2)</sup>	Ex-e cable glands M25 x 1.5 (plastic) for cables from Ø 8 - 17 mm, option: M20 x 1.5 metal thread <sup>2)</sup>
Degree of protection accd. to EN 60529	IP65	IP65
Protective cover / protective bowl	single-safety glass pane of 5 mm thick	single-safety glass pane of 5 mm thick

<sup>1)</sup> depends on used lamps<sup>2)</sup> with dustcover if entry/thread is not closed



Technical data

	RLF 250436	RLF 25058/58
EC-Type Examination Certificate	FTZU 06 ATEX 0050 X	FTZU 06 ATEX 0050 X
Marking accd. to 94/9/EC	⊕ II 2 G Ex ed IIC T4 ⊕ II 2 D Ex tb IIIC T60 °C Db	⊕ II 2 G Ex ed IIC T4 ⊕ II 2 D Ex tb IIIC T60 °C Db
Permissible ambient temperature	-20 °C up to +40 °C	-20 °C up to +40 °C
Rated voltage	110 - 254 V AC / 110 - 250 V DC	220 - 254 V AC / 195 - 250 V DC
Rated current	0.68 A	0.53 A
Frequency	50 - 60 Hz	50 - 60 Hz
Power factor cos φ	≥ 0.95	≥ 0.95
Circuit	EVG	EVG
Protection class	I	I
Lamp / Illuminant	4 x T26 / 36 W (T8)	2 x T26 / 58 W (T8)
Rated luminous flux	13400 lm <sup>1)</sup>	10400 lm <sup>1)</sup>
Lamp cap	G13 accd. to IEC 60061-1	G13 accd. to IEC 60061-1
Light efficiency in operation	69 %	68 %
Dimensions (L x W x H)	1312 x 362 x 130 mm	1611 x 302 x 130 mm
Connecting terminals	L1, L2, L3, N, PE; max. 2 x 2.5 mm <sup>2</sup> through-wiring twin-ended	L1, L2, L3, N, PE; max. 2 x 2.5 mm <sup>2</sup> through-wiring twin-ended
Enclosure colour	white RAL 9010	white RAL 9010
Enclosure material	painted steel sheet, white optional: polished stainless steel 304 (1.4301)	painted steel sheet, white optional: polished stainless steel 304 (1.4301)
Weight	16.5 kg	17.2 kg
Cable glands / gland plates / enclosure drilling	Ex-e cable glands M25 x 1.5 (plastic) for cables from Ø 8 - 17 mm, option: M20 x 1.5 metal thread <sup>2)</sup>	Ex-e cable glands M25 x 1.5 (plastic) for cables from Ø 8 - 17 mm, option: M20 x 1.5 metal thread <sup>2)</sup>
Degree of protection accd. to EN 60529	IP65	IP65
Protective cover / protective bowl	single-safety glass pane of 5 mm thick	single-safety glass pane of 5 mm thick

<sup>1)</sup> depends on used lamps

<sup>2)</sup> with dustcover if entry/thread is not closed

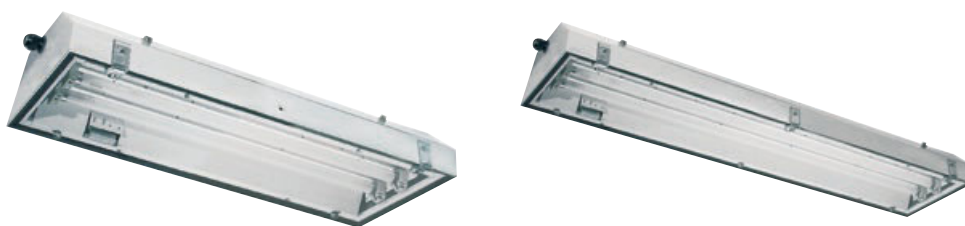


## Technical data

	RLF 250358	RLF 250458
EC-Type Examination Certificate	FTZU 06 ATEX 0050 X	FTZU 06 ATEX 0050 X
Marking accd. to 94/9/EC	Ⓢ II 2 G Ex ed IIC T4 Ⓢ II 2 D Ex tb IIIC T60 °C Db	Ⓢ II 2 G Ex ed IIC T4 Gb Ⓢ II 2 D Ex tb IIIC T60 °C Db
Permissible ambient temperature	-20 °C up to +40 °C	-20 °C up to +40 °C
Rated voltage	220 - 254 V AC / 195 - 250 V DC	220 - 254 V AC / 195 - 250 V DC
Rated current	0.80 A	1.06 A
Frequency	50 - 60 Hz	50 - 60 Hz
Power factor cos φ	≥ 0.95	≥ 0.95
Circuit	EVG	EVG
Protection class	I	I
Lamp / Illuminant	3 x T26 / 58 W (T8)	4 x T26 / 58 W (T8)
Rated luminous flux	15600 lm <sup>1)</sup>	20800 lm <sup>1)</sup>
Lamp cap	G13 accd. to IEC 60061-1	G13 accd. to IEC 60061-1
Light efficiency in operation	66 %	67 %
Dimensions (L x W x H)	1611 x 302 x 130 mm	1611 x 362 x 130 mm
Connecting terminals	L1, L2, L3, N, PE; max. 2 x 2.5 mm <sup>2</sup> through-wiring twin-ended	L1, L2, L3, N, PE; max. 2 x 2.5 mm <sup>2</sup> through-wiring twin-ended
Enclosure colour	white RAL 9010	white RAL 9010
Enclosure material	painted steel sheet, white optional: polished stainless steel 304 (1.4301)	painted steel sheet, white optional: polished stainless steel 304 (1.4301)
Weight	17.8 kg	19.8 Kg
Cable glands / gland plates / enclosure drilling	Ex-e cable glands M25 x 1.5 (plastic) for cables from Ø 8 - 17 mm, option: M20 x 1.5 metal thread <sup>2)</sup>	Ex-e cable glands M25 x 1.5 (plastic) for cables from Ø 8 - 17 mm, option: M20 x 1.5 metal thread <sup>2)</sup>
Degree of protection accd. to EN 60529	IP65	IP65
Protective cover / protective bowl	single-safety glass pane of 5 mm thick	single-safety glass pane of 5 mm thick

<sup>1)</sup> depends on used lamps

<sup>2)</sup> with dustcover if entry/thread is not closed



2

## Technical data

	RLF 25018/18 CG-S	RLF 25036/36 CG-S
EC-Type Examination Certificate	FTZU 06 ATEX 0050 X	FTZU 06 ATEX 0050 X
Marking accd. to 94/9/EC	Ⓜ II 2 G Ex ed mb IIC T4 Gb Ⓜ II 2 D Ex tb IIIC T60 °C Db	Ⓜ II 2 G Ex ed mb IIC T4 Gb Ⓜ II 2 D Ex tb IIIC T60 °C Db
Permissible ambient temperature	-20 °C up to +40 °C	-20 °C up to +40 °C
Rated voltage	220 - 254 V AC / 195 - 250 V DC	220 - 254 V AC / 195 - 250 V DC
Rated current	0.19 A	0.35 A
Frequency	50 - 60 Hz	50 - 60 Hz
Power factor cos φ	≥ 0.95	≥ 0.95
Circuit	EVG/CG-S	EVG/CG-S
Protection class	I	I
Lamp / Illuminant	2 x T26 / 18 W (T8)	2 x T26 / 36 W (T8)
Rated luminous flux	2700 lm <sup>1)</sup>	6700 lm <sup>1)</sup>
Lamp cap	G13 accd. to IEC 60061	G13 accd. to IEC 60061
Light efficiency in operation	70 %	70 %
Luminous flux in emergency operation	1350 lm <sup>1)</sup>	3350 lm <sup>1)</sup>
Dimensions (L x W x H)	701 x 302 x 130 mm	1312 x 302 x 130 mm
Connecting terminals	L1, L2, L3, N, PE; max. 2 x 2.5 mm <sup>2</sup> through-wiring twin-ended	L1, L2, L3, N, PE; max. 2 x 2.5 mm <sup>2</sup> through-wiring twin-ended
Enclosure colour	white RAL 9010	white RAL 9010
Enclosure material	painted steel sheet, white optional: polished stainless steel 304 (1.4301)	painted steel sheet, white optional: polished stainless steel 304 (1.4301)
Weight	7.6 kg	13.6 kg
Cable glands / gland plates / enclosure drilling	Ex-e cable glands M25 x 1.5 (plastic) for cables from Ø 8 - 17 mm, option: M20 x 1.5 metal thread <sup>2)</sup>	Ex-e cable glands M25 x 1.5 (plastic) for cables from Ø 8 - 17 mm, option: M20 x 1.5 metal thread <sup>2)</sup>
Degree of protection accd. to EN 60529	IP65	IP65
Protective cover / protective bowl	single-safety glass pane of 5 mm thick	single-safety glass pane of 5 mm thick

<sup>1)</sup> depends on used lamps

<sup>2)</sup> with dustcover if entry/thread is not closed



### Technical data

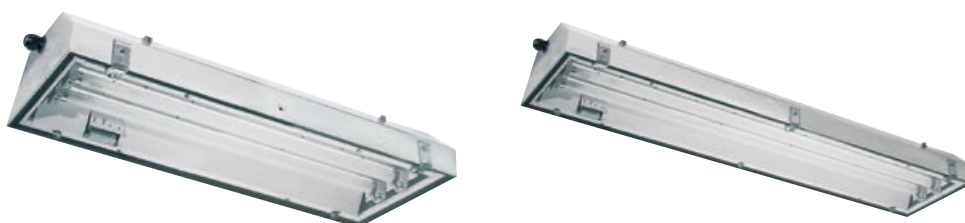
#### RLF 25058/58 CG-S

EC-Type Examination Certificate	FTZU 06 ATEX 0050 X
Marking accd. to 94/9/EC	Ⓜ II 2 G Ex ed mb IIC T4 Gb Ⓜ II 2 D Ex tb IIIC T60 °C Db
Permissible ambient temperature	-20 °C up to +40 °C
Rated voltage	220 - 254 V AC / 195 - 250 V DC
Rated current	0.54 A
Frequency	50 - 60 Hz
Power factor cos φ	≥ 0.95
Circuit	EVG/CG-S
Protection class	I
Lamp / Illuminant	2 x T26 / 58 W (T8)
Rated luminous flux	10400 lm <sup>1)</sup>
Lamp cap	G13 accd. to IEC 60061
Light efficiency in operation	68 %
Luminous flux in emergency operation	5200 lm <sup>1)</sup>
Dimensions (L x W x H)	1611 x 302 x 130 mm
Connecting terminals	L1, L2, L3, N, PE; max. 2 x 2.5 mm <sup>2</sup> through-wiring twin-ended
Enclosure colour	white RAL 9010
Enclosure material	painted steel sheet, optional: polished stainless steel 304 (1.4301)
Weight	17.9 kg
Cable glands / gland plates / enclosure drilling	Ex-e cable glands M25 x 1.5 (plastic) for cables from Ø 8 - 17 mm, option: M20 x 1.5 metal thread <sup>2)</sup>
Degree of protection accd. to EN 60529	IP65
Protective cover / protective bowl	single-safety glass pane of 5 mm thick

<sup>1)</sup> depends on used lamps

<sup>2)</sup> with dustcover if entry/thread is not closed





## Technical data

	RLF 25018/18 N / RLF 25036/36 N	RLF 250418 N / RLF 250436 N
EC-Type Examination Certificate	FTZU 06 ATEX 0050 X	FTZU 06 ATEX 0050 X
Marking accd. to 94/9/EC	Ⓜ II 2 G Ex d e ib mb IIC T4 Gb Ⓜ II 2 D Ex tb IIIC T60 °C Db	Ⓜ II 2 G Ex d e ib mb IIC T4 Gb Ⓜ II 2 D Ex tb IIIC T60 °C Db
Permissible ambient temperature	0 °C up to +40 °C (specified data)	0 °C up to +40 °C
Battery	3.6 V/4 Ah NC-Accu / 6 V/4 Ah NC-Accu	3.6 V/4 Ah NC-Accu / 6 V/4 Ah NC-Accu
Rated voltage	230 - 240 V AC	230 - 240 V AC
Rated current	0.20 A / 0.36 A	0.36 A / 0.68 A
Frequency	50 - 60 Hz	50 - 60 Hz
Charging duration	≥ 24 h	≥ 24 h
Power factor cos φ	≥ 0.95	≥ 0.95
Circuit	EVG with emergency lighting supply	EVG with emergency lighting supply
Protection class	I	I
Lamp / Illuminant	2 x T26 / 18 W (T8) / 2 x T26 / 36 W (T8)	4 x T26 / 18 W (T8) / 4 x T26 / 36 W (T8)
Rated luminous flux	2700 lm <sup>1)</sup> / 6700 lm <sup>1)</sup>	5400 lm <sup>1)</sup> / 13400 lm <sup>1)</sup>
Lamp cap	G13 accd. to IEC 60061-1	G13 accd. to IEC 60061-1
Light efficiency in operation	70 %	70 %
Luminous flux in emergency operation (1.5 h, one lamp)	270 lm (20 %) / 603 lm (18 %)	270 lm (20 %) / 603 lm (18 %)
Luminous flux in emergency operation (3 h, one lamp)	216 lm (16 %) / 436 lm (13 %)	216 lm (16 %) / 436 lm (13 %)
Rated emergency lighting duration	1.5 h / 3 h	1.5 h / 3 h
Dimensions (L x W x H)	701 x 302 x 130 mm / 1312 x 302 x 130 mm	701 x 362 x 130 mm / 1312 x 362 x 130 mm
Connecting terminals	L1, L2, L3, N, PE; max. 2 x 2.5 mm <sup>2</sup> through-wiring twin-ended	L1, L2, L3, N, PE; max. 2 x 2.5 mm <sup>2</sup> through-wiring twin-ended
Enclosure colour	white RAL 9010	white RAL 9010
Enclosure material	painted steel sheet, white optional polished stainless steel	painted steel sheet, white optional polished stainless steel
Weight	8.9 kg / 14.9 kg	11.5 kg / 18.5 kg
Cable glands / gland plates / enclosure drilling	Ex-e cable glands M25 x 1.5 (plastic) for cables from Ø 8 - 17 mm, option: M20 x 1.5 metal thread <sup>2)</sup>	Ex-e cable glands M25 x 1.5 (plastic) for cables from Ø 8 - 17 mm, option: M20 x 1.5 metal thread <sup>2)</sup>
Degree of protection accd. to EN 60529	IP65	IP65
Protective cover / protective bowl	single-safety glass pane of 5 mm thick	single-safety glass pane of 5 mm thick

<sup>1)</sup> depends on used lamps

<sup>2)</sup> with dustcover if entry/thread is not closed