





Ordering details

Type	Content	Terminals	Through-wiring single-ended	Through-wiring twin-ended	Cable gland/thread	Threaded plug	Blanking plug	Order No.	
eLLS 08018/18									
	eLLS 08018/18 (2 x 18 W)	2/6-2K	2 x 6	–	x	2 x M25, plastic	2 x M25	2	1 2225 218 001
	eLLS 08018/18 (2 x 18 W)	1/6-1K	1 x 6	x	–	1 x M25, plastic	1 x M25	1	1 2225 218 002
	eLLS 08018/18 (2 x 18 W)	2/6-2M ¹⁾	2 x 6	–	x	4 x M20, metal thread	3 x M20		1 2225 218 011
	eLLS 08018/18 (2 x 18 W)	1/6-1M ¹⁾	1 x 6	x	–	2 x M20, metal thread	1 x M20		1 2225 218 012
eLLS 08036/36									
	eLLS 08036/36 (2 x 36 W)	2/6-2K	2 x 6	–	x	2 x M25, plastic	2 x M25	2	1 2226 236 001
	eLLS 08036/36 (2 x 36 W)	1/6-1K	1 x 6	x	–	2 x M25, plastic		1	1 2226 236 002
	eLLS 08036/36 (2 x 36 W)	2/6-2M ¹⁾	2 x 6	–	x	4 x M20, metal thread	3 x M20		1 2226 236 011
	eLLS 08036/36 (2 x 36 W)	1/6-1M ¹⁾	1 x 6	x	–	2 x M20, metal thread	1 x M20		1 2226 236 012
eLLS 08018/18 NIB									
	eLLS 08018/18 NIB (2 x 18 W)	2/6-2K	2 x 6	–	x	2 x M25, plastic	2 x M25	2	1 2225 218 021
	eLLS 08018/18 NIB (2 x 18 W)	1/6-1K	1 x 6	x	–	2 x M25, plastic	1 x M25	2	1 2225 218 022
	eLLS 08018/18 NIB (2 x 18 W)	2/6-2M ¹⁾	2 x 6	–	x	4 x M20, metal thread	3 x M20		1 2225 218 031
	eLLS 08018/18 NIB (2 x 18 W)	1/6-1M ¹⁾	1 x 6	x	–	2 x M20, metal thread	1 x M20		1 2225 218 032
eLLS 08036/36 NIB									
	eLLS 08036/36 NIB (2 x 36 W)	2/6-2K	2 x 6	–	x	2 x M25, plastic	2 x M25	2	1 2226 236 021
	eLLS 08036/36 NIB (2 x 36 W)	1/6-1K	1 x 6	x	–	2 x M25, plastic		1	1 2226 236 022
	eLLS 08036/36 NIB (2 x 36 W)	2/6-2M ¹⁾	2 x 6	–	x	4 x M20, metal thread	3 x M20		1 2226 236 031
	eLLS 08036/36 NIB (2 x 36 W)	1/6-1M ¹⁾	1 x 6	x	–	2 x M20, metal thread	1 x M20		1 2226 236 032

¹⁾ with metal thread, without cable gland

Scope of delivery without lamp and fixing accessories

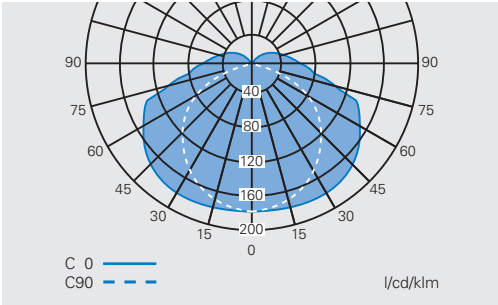
Metal cable glands see catalogue part 2: 2.3.12 ff

2.5

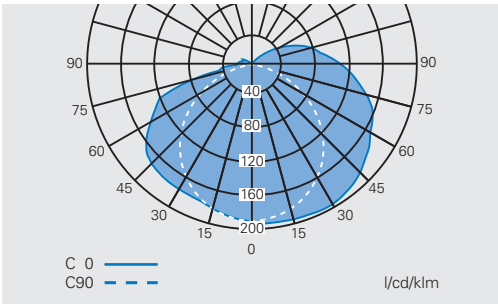
Dimension drawing / Polar curve

eLLS 08018/18 / eLLS 08036/36 / eLLS 08018/18 NIB / eLLS 08036/36 NIB

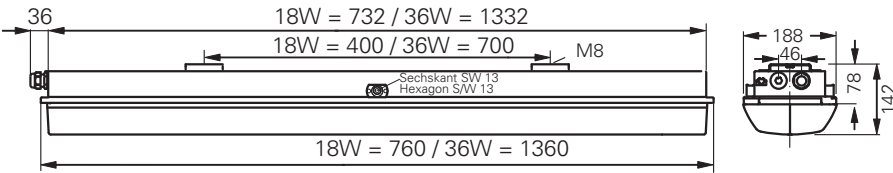
**Polar curve eLLS 08018/18
eLLS 08036/36**



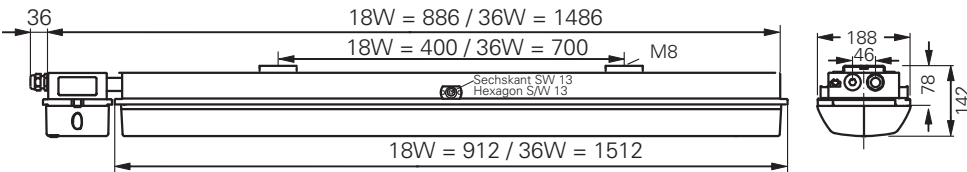
**Polar curve eLLS 08018/18 NIB /
eLLS 08036/36 NIB
(emergency mode)**



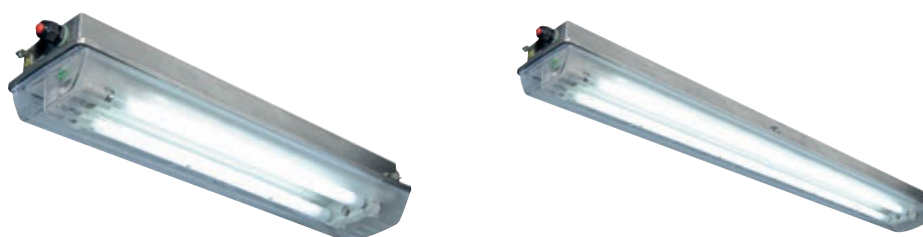
eLLS 08018/18 / eLLS 08036/36



eLLS 08018/18 NIB / eLLS 08036/36 NIB



Dimensions in mm



Technical data

	eLLS 08018/18 (2 x 18 W)	eLLS 08036/36 (2 x 36 W)
EC-Type Examination Certificate	BVS 09 ATEX E 034	BVS 09 ATEX E 034
IECEX Certificate of Conformity	IECEX BVS 09.0033	IECEX BVS 09.0033
Marking accd. to 94/9/EC	⊕ II 2 G Ex de IIC T4 Gb ⊕ II 2 D Ex tb IIIC T80 °C Db IP66	⊕ II 2 G Ex de IIC T4 Gb ⊕ II 2 D Ex tb IIIC T80 °C Db IP66
Marking accd. to IECEx	Ex de IIC T4 Gb Ex tb IIIC T80 °C Db	Ex de IIC T4 Gb Ex tb IIIC T80 °C Db
Permissible ambient temperature	-25 °C up to +55 °C (U _N ≥ 220 V) -25 °C up to +50 °C (U _N ≤ 220 V)	-25 °C up to +55 °C (U _N ≥ 220 V) -25 °C up to +50 °C (U _N ≤ 220 V)
IK-class according to EN 50102	IK 10 ± 20 J	IK 10 ± 20 J
Rated voltage	110 - 254 V AC 110 - 250 V DC	110 - 254 V AC 110 - 250 V DC
Rated current	0.18 A	0.34
Frequency	50 - 60 Hz	50 - 60 Hz
Power factor cos φ	≥ 0.95	≥ 0.95
Circuit	EVG	EVG
Protection class	I	I
Lamp / Illuminant	2 x T26 / 18 W (T8)	2 x T26 / 36 W (T8)
Rated luminous flux	2700 lm ¹⁾	6700 lm ¹⁾
Lamp cap	G13 accd. to IEC 60061-1	G13 accd. to IEC 60061-1
Light efficiency in operation	78 %	78 %
Dimensions (L x W x H)	760 x 188 x 130 mm	1360 x 188 x 130 mm
Connecting terminals	L1, L2, L3, L, N, PE max. 2 x 6 mm ² per terminal	L1, L2, L3, L, N, PE max. 2 x 6 mm ² per terminal
Enclosure material	stainless steel 316 Ti (1.4571)	stainless steel 316 Ti (1.4571)
Weight	6.2 kg	8.9 kg
Cable glands / gland plates / enclosure drilling	Ex-e cable glands M25 x 1.5 (plastic) for cables from Ø 8 - 17 mm, option: M20 x 1.5 metal thread ²⁾	Ex-e cable glands M25 x 1.5 (plastic) for cables from Ø 8 - 17 mm, option: M20 x 1.5 metal thread ²⁾
Degree of protection accd. to EN 60529	IP66	IP66
Protective cover / protective bowl	Polycarbonate	Polycarbonate

¹⁾ depends on used lamps

²⁾ with dustcover if entry/thread is not closed

2.5

Technical data

eLLS 08018/18 NIB (2 x 18 W) / eLLS 08036/36 NIB (2 x 36 W)



Technical data

	eLLS 08018/18 NIB (2 x 18 W)	eLLS 08036/36 NIB (2 x 36 W)
EC-Type Examination Certificate	BVS 09 ATEX E 034	BVS 09 ATEX E 034
IECEX Certificate of Conformity	IECEX BVS 09.0033	IECEX BVS 09.0033
Marking accd. to 94/9/EC	⊕ II 2 G Ex de mb IIC T4 Gb ⊕ II 2 D Ex tb IIIC T80 °C Db	⊕ II 2 G Ex de mb IIC T4 Gb ⊕ II 2 D Ex tb IIIC T80 °C Db
Marking accd. to IECEX	Ex de mb IIC T4 Gb Ex tb IIIC T80 °C Db IP66	Ex de mb IIC T4 Gb Ex tb IIIC T80 °C Db IP66
Permissible ambient temperature	-25 °C up to +50 °C	-25 °C up to +55 °C
IK-class according to EN 50102	IK 10 Δ 20 J	IK 10 Δ 20 J
Rated voltage	220 - 254 V AC / optional 110 - 127 V AC	220 - 254 V AC / optional 110 - 127 V AC
Rated current	0.23 A	0.40
Frequency	50 - 60 Hz	50 - 60 Hz
Charging duration	\geq 14 h	\geq 14 h
Power factor cos ϕ	\geq 0.95	\geq 0.95
Circuit	EVG with emergency lighting supply	EVG with emergency lighting supply
Protection class	I	I
Lamp / Illuminant	2 x T26 / 18 W (T8)	2 x T26 / 36 W (T8)
Rated luminous flux	2700 lm ¹⁾	6700 lm ¹⁾
Lamp cap	G13 accd. to IEC 60061-1	G13 accd. to IEC 60061-1
Light efficiency in operation	78 %	78 %
Luminous flux in emergency operation (1.5 h, one lamp)	1215 lm (90 %)	1507 lm (45 %)
Luminous flux in emergency operation (3 h, one lamp)	607 lm (45 %)	837 lm (25 %)
Rated emergency lighting duration	1-lamps can be set on site for an emergency lighting duration of 1.5 or 3 hours	1-lamps can be set on site for an emergency lighting duration of 1.5 or 3 hours
Dimensions (L x W x H)	900 x 188 x 130 mm	1500 x 188 x 130 mm
Connecting terminals	L1, L2, L3, L, N, PE; max. 2 x 6 mm ² per terminal	L1, L2, L3, L, N, PE; max. 2 x 6 mm ² per terminal
Enclosure material	stainless steel 316 Ti (1.4571)	stainless steel 316 Ti (1.4571)
Weight	10.4 kg	14.0 kg
Cable glands / gland plates / enclosure drilling	Ex-e cable glands M25 x 1.5 (plastic) for cables from \varnothing 8 - 17 mm, option: M20 x 1.5 metal thread ²⁾	Ex-e cable glands M25 x 1.5 (plastic) for cables from \varnothing 8 - 17 mm, option: M20 x 1.5 metal thread ²⁾
Degree of protection accd. to EN 60529	IP66	IP66
Protective cover / protective bowl	Polycarbonate	Polycarbonate

¹⁾ depends on used lamps

²⁾ with dustcover if entry/thread is not closed