

E X - J U N C T I O N B O X E S

Light metal design for Zone 1, 2, 21 and 22

2 The sturdy CEAG junction boxes made of light metal are used to distribute and conduct electricity in Zone 1 and Zone 2 areas with no risk of explosion. Optionally, mantle terminals with a terminal range of 6 mm² are available for these branching boxes. Four M20 threaded holes allow variable equipment with various ducts for cables and lines.

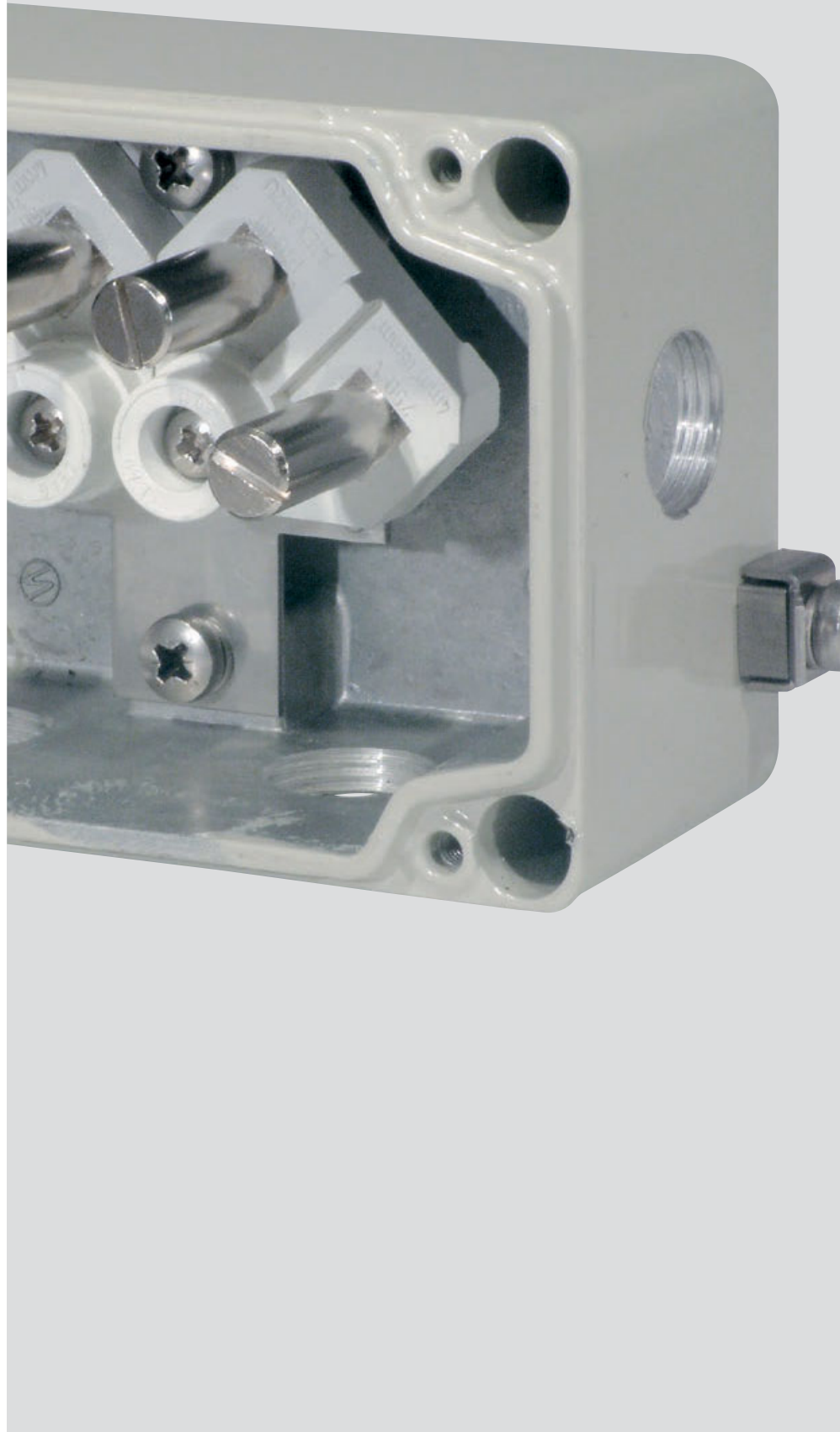
Drilled holes, cable and line ducts, through which no lines are conducted, should be closed with certified threaded stoppers.

High chemical resistance of the housing is ensured by the use of impact-resistant plastic powder coating.

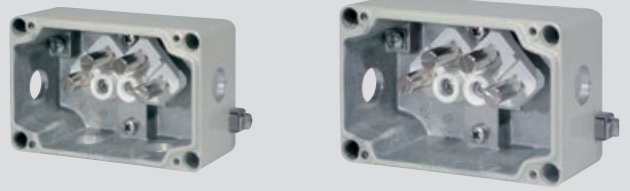
Covered screws and all outside and inside metallic parts are made of stainless steel (AISI 316L).

The light metal branching box has an outside earthing connection.

Internationally approved.



- Mechanical, chemical and thermal resistance
- Impact-resistant plastic powder coating



GHG 793 0101 R0002

GHG 793 0101 R0001

Technical data

Type 793 01 up to 5 terminals

Marking accd. to 94/9/EC	⊕ II 2 G Ex dem ia II, IIC T6 / ⊕ II 2 D Ex tD A21 IP66 T80 °C
EC-Type Examination Certificate	PTB 00 ATEX 3108
Permissible ambient temperature	-20 °C to +40 °C -55 °C to +55 °C (option)
Rated voltage	690 V
Rated current	depends on terminal cross section
Terminal cross section	max. 3 x 4 mm ² or 1 x 10 mm ² with pin cable lug + 1 x 2.5 mm ² fine wire max. 3 x 6 mm ² or 4 x 4 mm ² solid-wire
Protection class	I
Degree of protection accd. to EN 60529	IP66
Cable entry/enclosure drilling	max. 4 x M20 drilling
Dimensions (L x W x H)	82 x 130 x 72 mm
Weight	approx. 0.8 kg
Enclosure material	light alloy die-casting (AlSi)
Enclosure colour	light grey

Ordering details

Content	Cable gland	No. of terminals	Order No.
GHG 793 01 up to 4 terminals			
	2 x M20 drilling	4 x Ex-e, 1 x PE	GHG 793 0101 R0001
	4 x M20 drilling incl. 2 x blanking plug M20	4 x Ex-e, 1 x PE	GHG 793 0101 R0002

Other applications available on request.

Dimension drawing

