

Technical data

Plugs and receptacles - industrial use acc. to IEC 60309-1/2 up to 690 V

Permissible ambient temperature	-20 °C to +40 °C / -45 °C to +45 °C (optional) ¹⁾
Rated voltage	415 V (3-pole) / 690 V (4-/5-pole)
Rated current	16 A
Frequency	50/60 Hz
External back-up fuse, max.	without therm. protection: 16 A
Protection class	I
Degree of protection accd. to EN 60529	IP66

Wall socket with interlock switch

Rated making / Rated breaking capacity AC-3 accd. EN 60947-3	
for wall socket with switch	U_e 500 V / I_e 20 A
Cable entry	1 x M25 Ø 8 - 17 mm, 1 x M25 thread plug plastic
Connecting terminals	2 x 1.5 – 4 mm ²
Enclosure material	glass-fibre reinforced polyester

Wall socket without switch

Cable entry	2 x PG 16 top, 2 x PG 16 bottom
Connecting terminals	2 x 1.5 – 4 mm ²
Enclosure material	Polyamide

Plug

Cable entry	Ø 8 - 19 mm (3-pole) / Ø 8 - 21 mm (4-pole) / 12 - 21 mm (5-pole)
Connecting terminals	1 x 1.0 – 2.5 mm ²
Enclosure material	Polyamide

Coupler

Cable entry	Ø 8 - 19 mm (3-pole) / Ø 8 - 21 mm (4-pole) / 12 - 21 mm (5-pole)
Connecting terminals	2 x 1.5 – 4 mm ²
Enclosure material	Polyamide

Flange socket/inlet

Connecting terminals	2 x 1.5 – 4 mm ²
Enclosure material	Polyamide

¹⁾ extended temperature range on request

Industrial use: 16A 3-pole, 4-pole and 5-pole up to 415 V

1



Wall socket w. interlock switch

Inlet

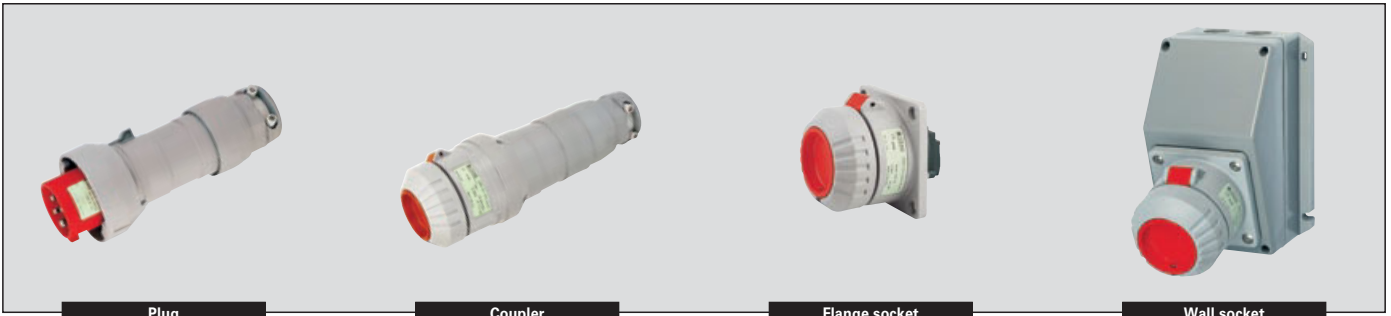
Coupler

Plug

Ordering details

Voltage	h	Type	Weight approx.	Order No.
Type 16 A 3-pole				
110-130 V		Wall socket	0.8 kg	GHG 521 2304 R0001
		Plug	0.32 kg	GHG 521 7304 R0001
		Coupler	0.5 kg	GHG 521 3304 R0001
		Flange socket	0.37 kg	GHG 521 8304 R0001
		Inlet	0.26 kg	GHG 521 9304 R0001
200-250 V		Wall socket	0.8 kg	GHG 521 2306 R0001
		Plug	0.32 kg	GHG 521 7306 R0001
		Coupler	0.5 kg	GHG 521 3306 R0001
		Flange socket	0.37 kg	GHG 521 8306 R0001
		Inlet	0.26 kg	GHG 521 9306 R0001
Type 16 A 4-pole				
200-250 V		Wall socket	0.85 kg	GHG 521 2409 R0001
		Wall socket with interlock switch	1.60 kg	GHG 521 4409 R0001
		Plug	0.39 kg	GHG 521 7409 R0001
		Coupler	0.65 kg	GHG 521 3409 R0001
		Flange socket	0.42 kg	GHG 521 8409 R0001
		Inlet	0.31 kg	GHG 521 9409 R0001
380-415 V		Wall socket	0.85 kg	GHG 521 2406 R0001
		Wall socket with interlock switch	1.60 kg	GHG 521 4406 R0001
		Plug	0.39 kg	GHG 521 7406 R0001
		Coupler	0.65 kg	GHG 521 3406 R0001
		Flange socket	0.42 kg	GHG 521 8406 R0001
		Inlet	0.31 kg	GHG 521 9406 R0001
480-500 V		Wall socket	0.85 kg	GHG 521 2407 R0001
		Wall socket with interlock switch	1.60 kg	GHG 521 4407 R0001
		Plug	0.39 kg	GHG 521 7407 R0001
		Coupler	0.65 kg	GHG 521 3407 R0001
		Flange socket	0.42 kg	GHG 521 8407 R0001
		Inlet	0.31 kg	GHG 521 9407 R0001
600-690 V		Wall socket	0.85 kg	GHG 521 2405 R0001
		Wall socket with interlock switch	1.60 kg	GHG 521 4405 R0001
		Plug	0.39 kg	GHG 521 7405 R0001
		Coupler	0.65 kg	GHG 521 3405 R0001
		Flange socket	0.42 kg	GHG 521 8405 R0001
		Inlet	0.31 kg	GHG 521 9405 R0001
Type 16 A 5-pole				
200-250 V		Wall socket	0.90 kg	GHG 521 2506 R0001
380-415 V		Wall socket with interlock switch	1.65 kg	GHG 521 4506 R0001
		Plug	0.42 kg	GHG 521 7506 R0001
		Coupler	0.75 kg	GHG 521 3506 R0001
		Flange socket	0.47 kg	GHG 521 8506 R0001
		Inlet	0.34 kg	GHG 521 9506 R0001

Other voltage ranges and versions available on request



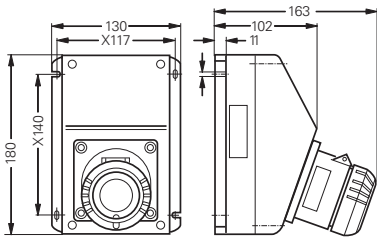
Plug

Coupler

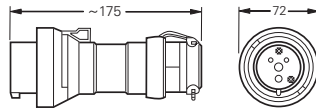
Flange socket

Wall socket

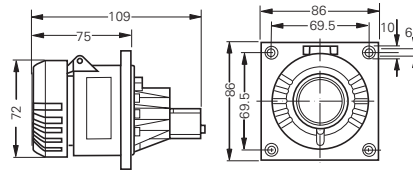
Dimension drawing



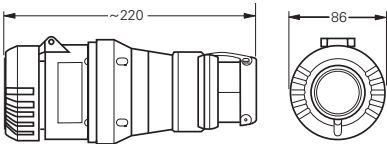
Wall socket 3-pole



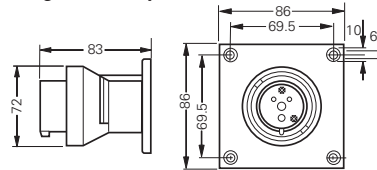
Plug 3-pole



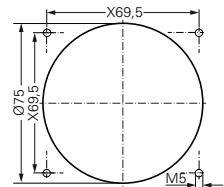
Flange socket 3-pole



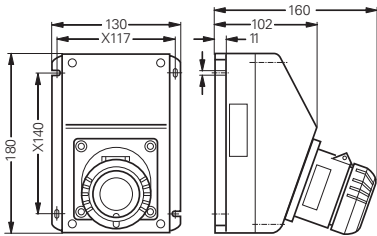
Coupler 3-pole



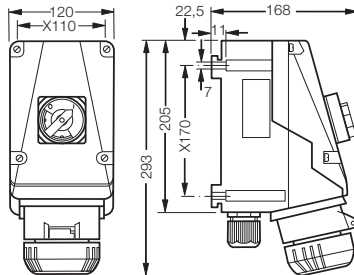
Inlet 3-pole



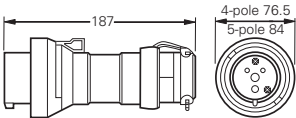
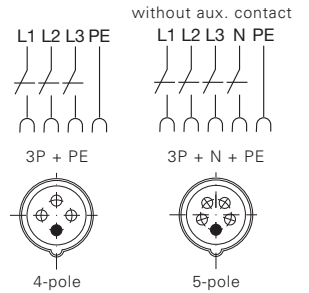
Assembly dimensions flange socket 3 + 4 pole and inlet



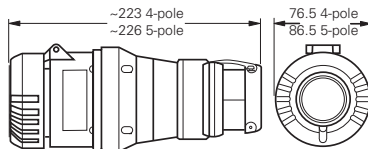
Wall socket 4/5-pole without switch



Wall socket 4/5-pole with switch

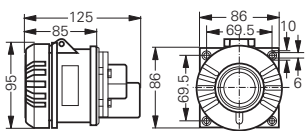


Plug 4/5-pole

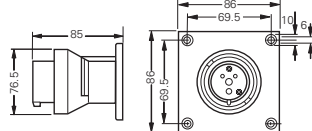


Coupler 4/5-pole

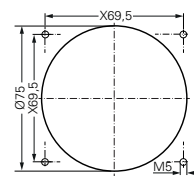
X = fixing dimensions



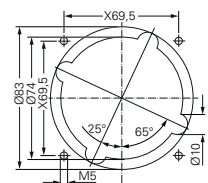
Flange socket 4/5-pole



Inlet 4/5-pole

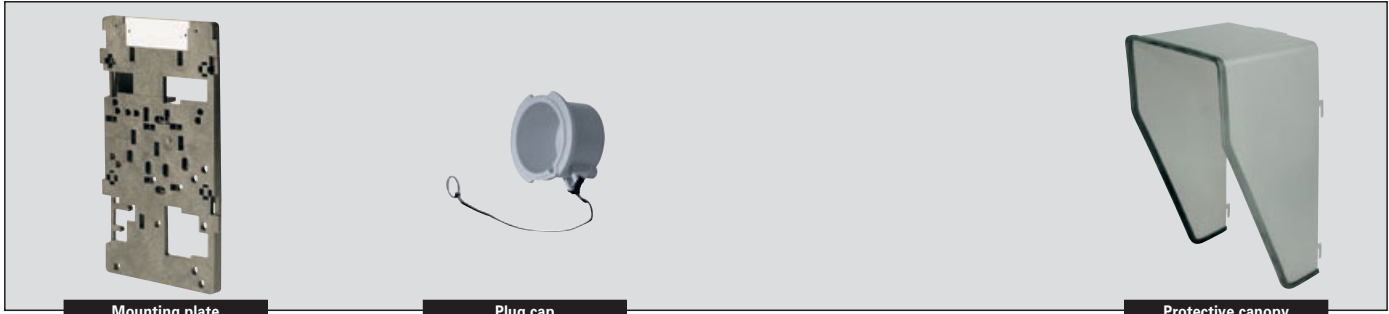


Assembly dimensions inlet 5 pole



Assembly dimensions flange socket 5 pole

Industrial use: 16A 3-pole, 4-pole and 5-pole up to 415 V



Mounting plate

Plug cap

Protective canopy

Accessories

Mounting plates for wall sockets 16 A

Type	Application	Fixing method	Order No.
Size 4	for wall mounting	snap on	GHG 610 1953 R0126
Size 4	for trellis mounting	snap on	GHG 610 1953 R0126
Size 4	for pipe clamp	snap on	GHG 610 1953 R0130

Plug cap for plugs 16 A

Type	Order No.
Plug 16 A 3-pole	GHG 510 1901 R0001
Plug 16 A 4-pole	GHG 510 1901 R0002
Plug 16 A 5-pole	GHG 510 1901 R0003

Accessories for mounting plates

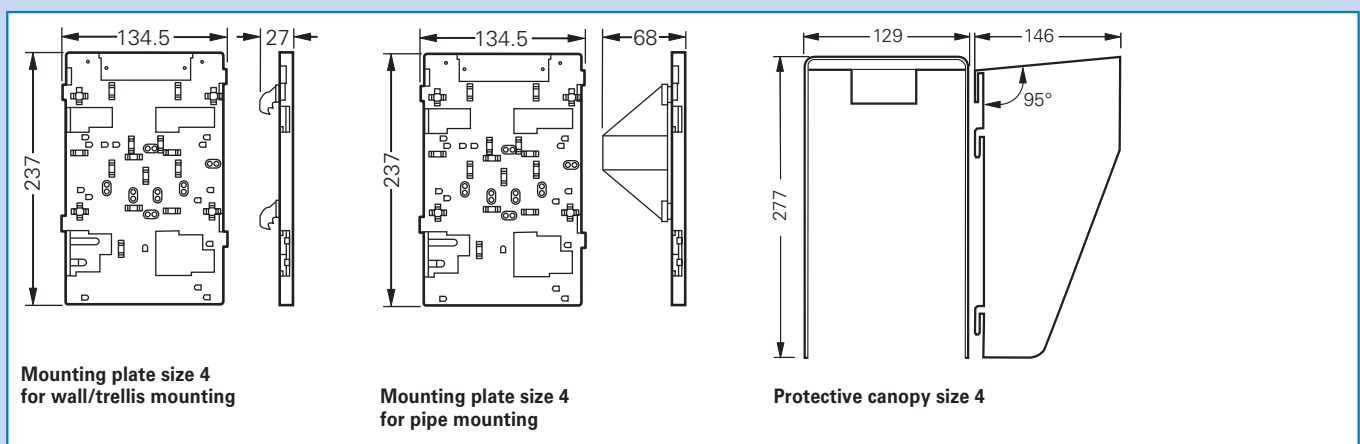
Type	OU	Order No.
Mounting set for pipes 1" (Ø 27 - 30 mm) for mounting plates with pipe fixing	10	GHG 610 1953 R0020

Please pay attention that only order units (OU) according to the ordering details can be delivered.

Protective canopy for mounting plate

Type	Application	Order No.
Size 4	for mounting plate size 4, snap on	GHG 610 1955 R0107

Dimension drawing



Mounting plate size 4 for wall/trellis mounting

Mounting plate size 4 for pipe mounting

Protective canopy size 4

Dimensions in mm