

**Technical data**

| Ex-Safety switch 20 A                                       |  |                               |
|---|--|-------------------------------|
| Marking to 94/9/EC  | Ⓔ II 2 G Ex ed ia IIC T6 / Ⓔ II 2 D Ex tD A21 IP66 T80 °C  |                               |
| EC-Type Examination Certificate                             | PTB 99 ATEX 1161   |                               |
| IECEX Certificate of Conformity                             | BKI 07.0012  |                               |
| Marking accd. to IECEx                                      | Ex ed ia IIC T6<br>Ex tD A21 IP66 T55 °C   |                               |
| Permissible ambient temperature                             | -20 °C to +40 °C <sup>1)</sup>   |                               |
| Rated voltage   | up to max. 690 V   |                               |
| Rated current   | max. 20 A  |                               |
| Frequency   | 50/60 Hz   |                               |
| Rated making-/breaking capacity AC-3<br>accd. to EN 60947-3 | U <sub>e</sub> 230 V / I <sub>e</sub> 20 A<br>U <sub>e</sub> 400 V / I <sub>e</sub> 20 A<br>U <sub>e</sub> 500 V / I <sub>e</sub> 10 A<br>U <sub>e</sub> 690 V / I <sub>e</sub> 10 A |                               |
| Back-up fuse  | up to 400 V AC: 35 A gL<br>up to 500 V AC: 35 A gL<br>up to 690 V AC: 25 A gL  |                               |
| Connecting terminals  | Main contact   | 2 x 4 mm <sup>2</sup>         |
|   | Auxiliary-/Signal contact  | 2 x 0.5 - 2.5 mm <sup>2</sup> |
| Insulation class  | I  |                               |
| Degree of protection accd. EN 60529                         | IP66   |                               |
| Cable glands/enclosure drilling                             | M20 (d = 5 - 13 mm) see ordering details<br>M25 (d = 8 - 17 mm) see ordering details<br>M32 (d = 12 - 21 mm) see ordering details<br>Option: metal flange with thread                |                               |
| Weight  | 3-pole   | approx. 1.48 kg               |
|   | 6-pole   | approx. 2.43 kg               |
| Enclosure material  | glass-fibre reinforced polyester   |                               |
| Enclosure colour  | black  |                               |
| Auxiliary contact   | 1 x NO making - lagging; breaking - leading<br>1 x NC (only 6-pole version) making - leading; breaking - lagging   |                               |
| Padlocking  | can be locked in OFF position with 3 commercially available padlocks   |                               |

<sup>1)</sup> Other ambient temperatures on request

## Ex-Safety switches



3-pole

3-pole EMERGENCY STOP

6-pole

6-pole EMERGENCY STOP

### Ordering details

| Version   | Cable entry       | Order No.          |
|---|-------------------|--------------------|
| Safety switch 20 A 3-pole                         |                   |                    |
| Version with 1 auxiliary contact (NO)             |                   |                    |
| 3-pole  | 2 x M32 / 1 x M25 | GHG 262 2301 R0001 |
| 3-pole EMERGENCY STOP                             | 2 x M32 / 1 x M25 | GHG 262 2301 R0002 |
| Safety switch 20 A 4-pole                         |                   |                    |
| Version with 2 auxiliary contact (1 x NO; 1 x NC) |                   |                    |
| 4-pole  | 2 x M20           | GHG 262 2301 R0007 |
| 4-pole EMERGENCY STOP                             | 2 x M32 / 1 x M25 | GHG 262 2301 R0010 |
| Safety switch 20 A 6-pole                         |                   |                    |
| Version with 2 auxiliary contact (1 x NO; 1 x NC) |                   |                    |
| 6-pole  | 4 x M32 / 1 x M25 | GHG 262 2601 R0001 |
| 6-pole  | 4 x M25           | GHG 262 2601 R0005 |
| 6-pole EMERGENCY STOP                             | 4 x M32 / 1 x M25 | GHG 262 2601 R0002 |

Customized version on request, auxiliary contacts in Ex ia available

### Accessories

#### Mounting plate for Ex-safety switch 20 A 3-pole

| Type   | Application      | Fixing technique | Order No.          |
|--------|------------------|------------------|--------------------|
| Size 2 | Wall mounting    | snap-on          | GHG 610 1953 R0104 |
| Size 2 | Pipe mounting    | snap-on          | GHG 610 1953 R0105 |
| Size 2 | Trellis mounting | snap-on          | GHG 610 1953 R0106 |

#### Mounting plate for Ex-safety switch 20 A 6-pole

| Type   | Application      | Fixing technique | Order No.          |
|--------|------------------|------------------|--------------------|
| Size 3 | Wall mounting    | snap-on          | GHG 610 1953 R0118 |
| Size 3 | Pipe mounting    | snap-on          | GHG 610 1953 R0110 |
| Size 3 | Trellis mounting | snap-on          | GHG 610 1953 R0118 |

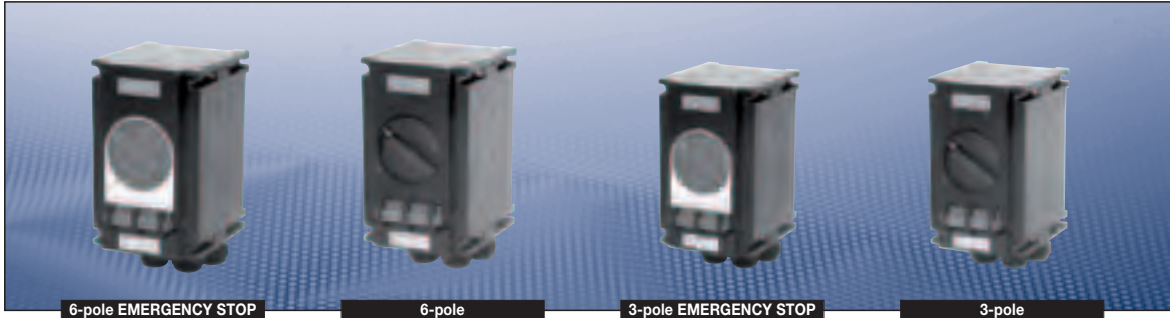
#### Accessories for mounting plates

| Type  | OU | Order No.          |
|---|----|--------------------|
| Label holder with label (unlabelled) for mounting plates size 1, 2, 2A and 3        | 10 | GHG 610 1953 R0057 |
| Installation kit for pipes 1" (of 27 - 30 mm) for mounting plates for pipe mounting | 10 | GHG 610 1953 R0020 |

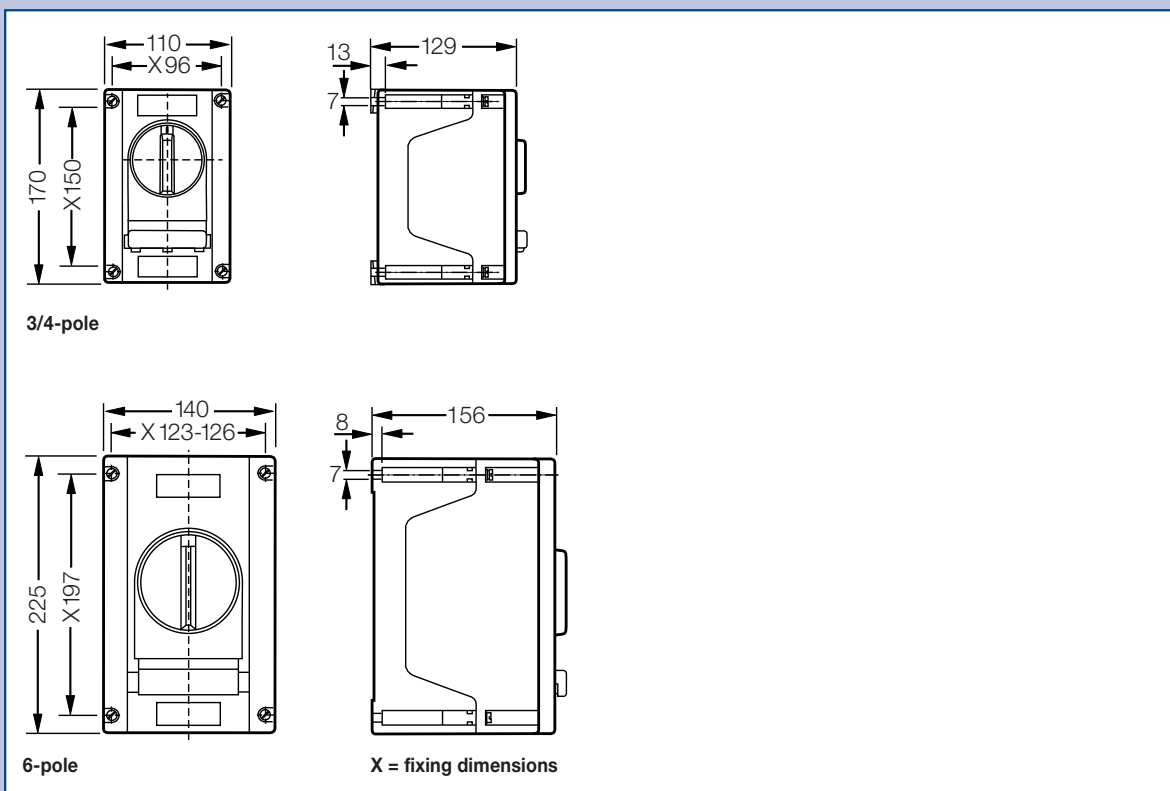
#### Accessories for canopies plates

| Type    | Application                                     | OU | Order No.          |
|---------|---|----|--------------------|
| Size 2  | for mounting plates size 2                      | 1  | GHG 610 1955 R0102 |
| Size 2A | for mounting plates size 2A                     | 1  | GHG 610 1955 R0103 |
| Size 3  | for pipe mounting plate size 3 vertical         | 1  | GHG 610 1955 R0104 |
| Size 3A | for wall/trellis mounting plate size 3 vertical | 1  | GHG 610 1955 R0105 |
| Size 3B | for pipe mounting plate size 3 horizontal       | 1  | GHG 610 1955 R0106 |

Please note that we can only deliver in the ordering units (OU) stated in the tables above



**Dimension drawing**



Dimensions in mm